

# State Line Pump Stations and Forcemain Pump Station 13/13A 10346 State Line Case 26-22

August 15, 2022

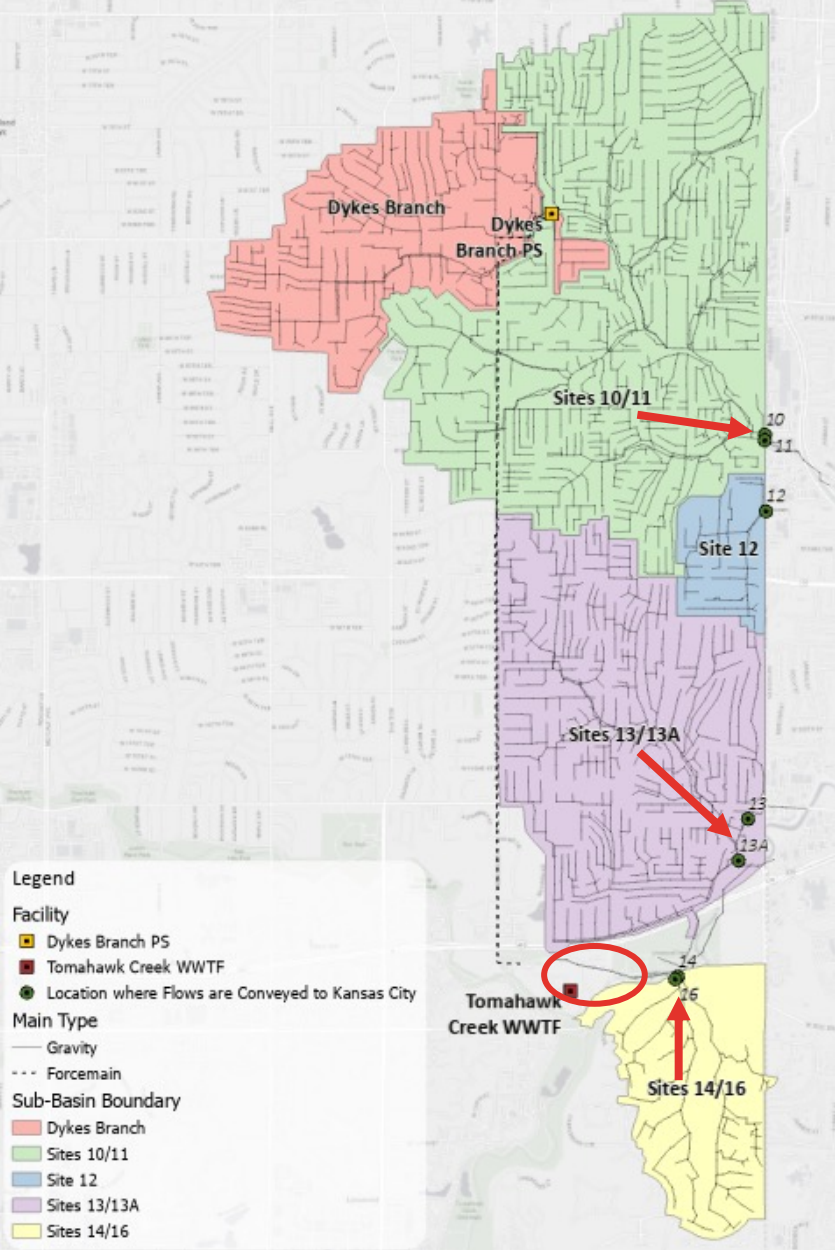
# Agenda

- Project Overview
- Public Outreach
- Site Planning
- Building Features
- Odor/Noise Mitigation
- Schedule

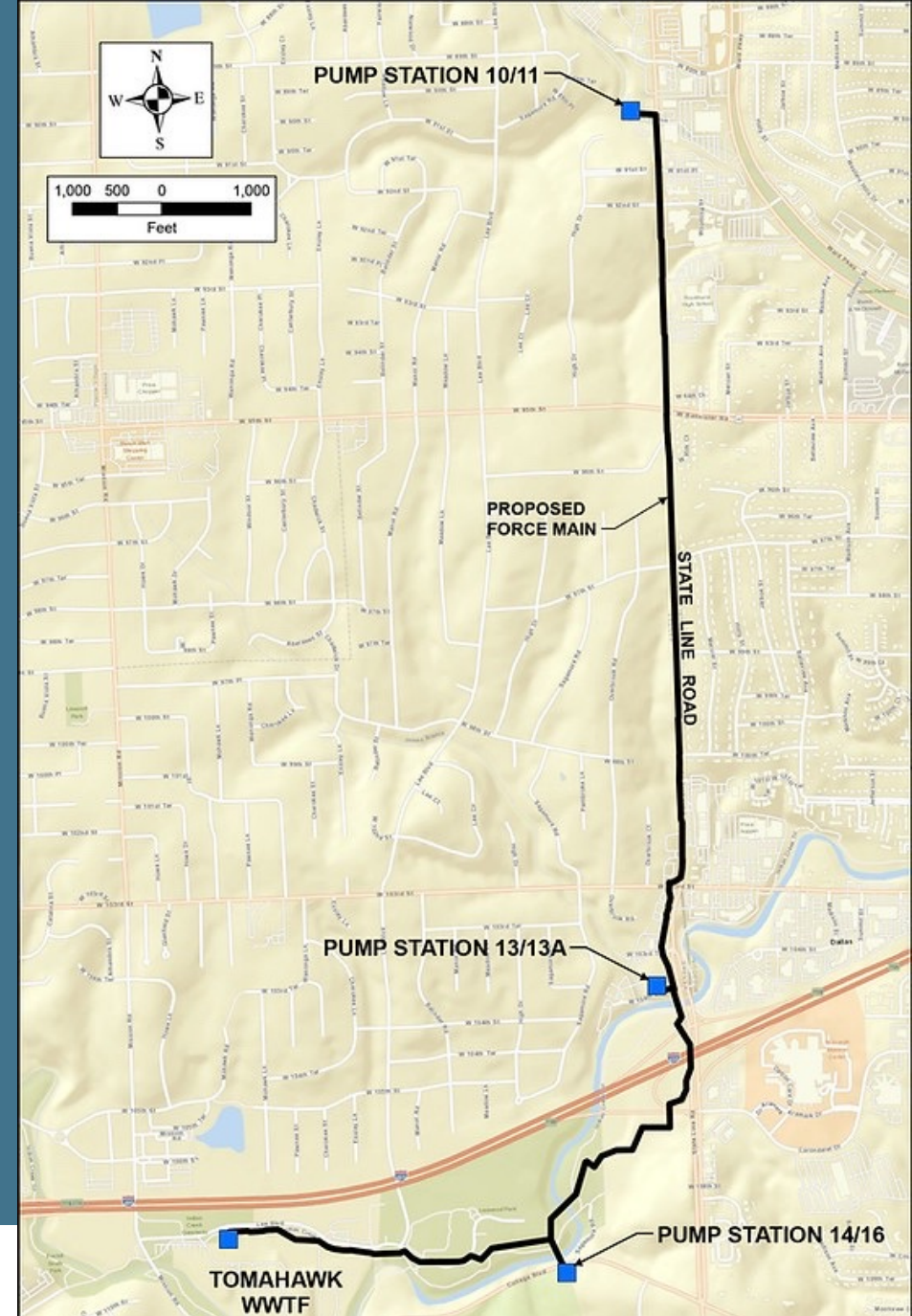
# Project Overview

Pump Station 13/13A - 10346 State Line

# Leawood Service Area Interagency Metering Facility (IMF) Locations



# Project Map



# Public Outreach

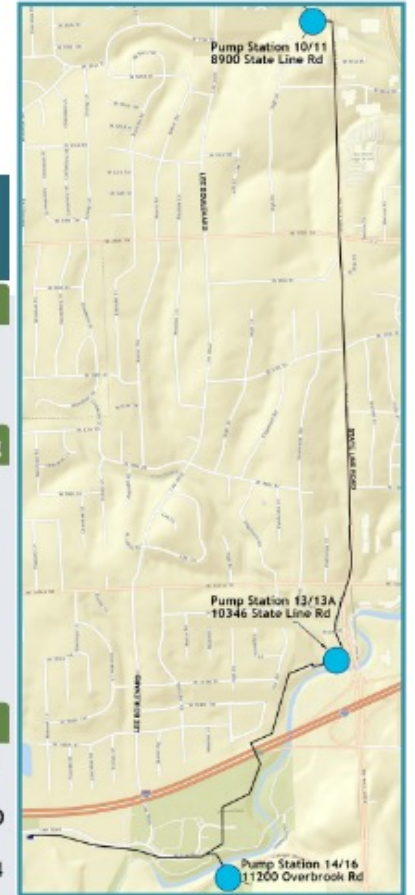
Pump Station 13/13A - 10346 State Line

# INTERACT Meetings

- March 8<sup>th</sup>
  - In-Person
  - aloft Hotel
- March 9<sup>th</sup>
  - Virtual Teams Meeting



NOTICE: State Line Pump Stations and Forcemain INTERACT Meetings		
<b>Project Location:</b> Pump Station 10/11 8900 State Line Rd Leawood, KS	<b>Project Location:</b> Pump Station 13/13A 10346 State Line Rd Leawood, KS	<b>Project Location:</b> Pump Station 14/16 11200 Overbrook Rd Leawood, KS
<b>In Person - INTERACT Meeting</b> <b>DATE:</b> Tuesday, Mar. 8, 2022 Open House Format <b>TIME:</b> 5 to 7 p.m. <b>MEETING LOCATION:</b> Aloft Leawood Hotel Tactic Meeting Room 11620 Ash Street Leawood, KS 66211	<b>In Person - INTERACT Meeting</b> <b>DATE:</b> Tuesday, Mar. 8, 2022 Open House Format <b>TIME:</b> 5 to 7 p.m. <b>MEETING LOCATION:</b> Aloft Leawood Hotel Tactic Meeting Room 11620 Ash Street Leawood, KS 66211	<b>In Person - INTERACT Meeting</b> <b>DATE:</b> Tuesday, Mar. 8, 2022 Open House Format <b>TIME:</b> 5 to 7 p.m. <b>MEETING LOCATION:</b> Aloft Leawood Hotel Tactic Meeting Room 11620 Ash Street Leawood, KS 66211
<b>Virtual - INTERACT Meeting</b> <b>DATE:</b> Wed., Mar. 9, 2022 <b>TIME:</b> 5 to 6 p.m. <b>PRE-REGISTRATION REQUIRED</b> go to: <a href="http://www.shockeyconsulting.com/interact-10">www.shockeyconsulting.com/interact-10</a>	<b>Virtual - INTERACT Meeting</b> <b>DATE:</b> Wed., March 9, 2022 <b>TIME:</b> 6 to 7 p.m. <b>PRE-REGISTRATION REQUIRED</b> go to: <a href="http://www.shockeyconsulting.com/interact-13">www.shockeyconsulting.com/interact-13</a>	<b>Virtual - INTERACT Meeting</b> <b>DATE:</b> Thurs., March 10, 2022 <b>TIME:</b> 6 to 7 p.m. <b>PRE-REGISTRATION REQUIRED</b> go to: <a href="http://www.shockeyconsulting.com/interact-14">www.shockeyconsulting.com/interact-14</a>



# Site Planning

Pump Station 13/13A - 10346 State Line



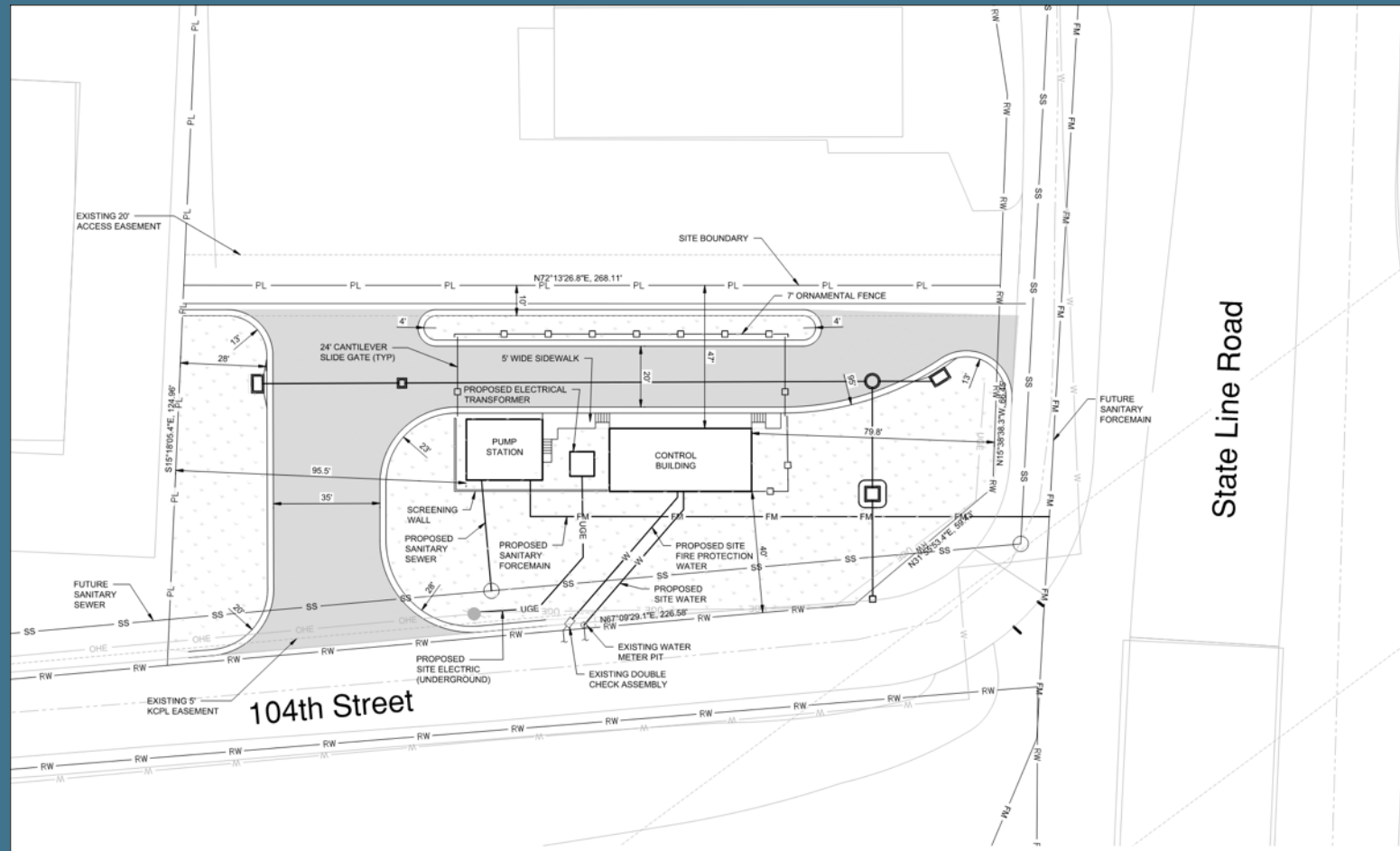


**LEGEND:**

- PROPOSED PAVEMENT
- PROPOSED GREEN SPACE

**GENERAL NOTES:**

1. PUMP STATION IS AN UNMANNED FACILITY WITH MAINTENANCE WORKERS STOPPING BY ON A WEEKLY BASIS. NO PARKING REQUIRED FOR SITE. NO DWELLING UNITS ON SITE.



State Line Road

JCW Purchased  
this Property on  
3/21/2022

BUILDING SCHEDULE 1						
STRUCTURE NAME	LENGTH (FT)	WIDTH (FT)	HEIGHT ABOVE FINISH GRADE (FT)	NUMBER OF STORIES	GROSS BUILDING AREA (SQ FT)	FLOOR AREA (SQ FT)
CONTROL BUILDING	46.67	20.67	21	1	965	717
PUMP STATION <sup>1</sup>	25	20	4	1	500	500

<sup>1</sup>PROPOSED UNMANNED PROCESS STRUCTURE

BUILDING SCHEDULE 2	
TOTAL SITE AREA	28,750 SQ FT
TOTAL SITE AREA	0.66 ACRES
TOTAL GROSS BUILDING AREA	1,465 SQ FT
TOTAL FLOOR AREA	1,217 SQ FT
MAXIMUM FLOOR AREA RATIO	0.25
FLOOR AREA RATIO	0.04
PERCENTAGE OF SITE COVERED BY BUILDINGS	4.00 %
MINIMUM REQUIRED OPEN SPACE	30.00 %
PERCENTAGE OF OPEN SPACE	57.00 %
MINIMUM REQUIRED LANDSCAPE	5 %
PROVIDED LANDSCAPE	50.00 %
MINIMUM REQUIRED PARKING SPACES	N/A
NUMBER OF DWELLING UNITS	0
MINIMUM REQUIRED BUILDING SETBACKS FOR FRONT AND INTERIOR	40 FT
MINIMUM BUILDING SETBACKS FOR FRONT AND INTERIOR	40 FT
MINIMUM REQUIRED BUILDING SETBACKS FOR SIDE AND REAR	25 FT
MINIMUM BUILDING SETBACKS FOR SIDE AND REAR	40 FT
MINIMUM REQUIRED PARKING SETBACKS FOR FRONT	40 FT
MINIMUM PARKING SETBACKS FOR FRONT	N/A
MINIMUM REQUIRED PARKING SETBACKS FOR SIDE, INTERIOR, AND REAR	10 FT
MINIMUM PARKING SETBACKS FOR SIDE, INTERIOR, AND REAR	10 FT

# Site Plan



# Building Features

Pump Station 13/13A - 10346 State Line

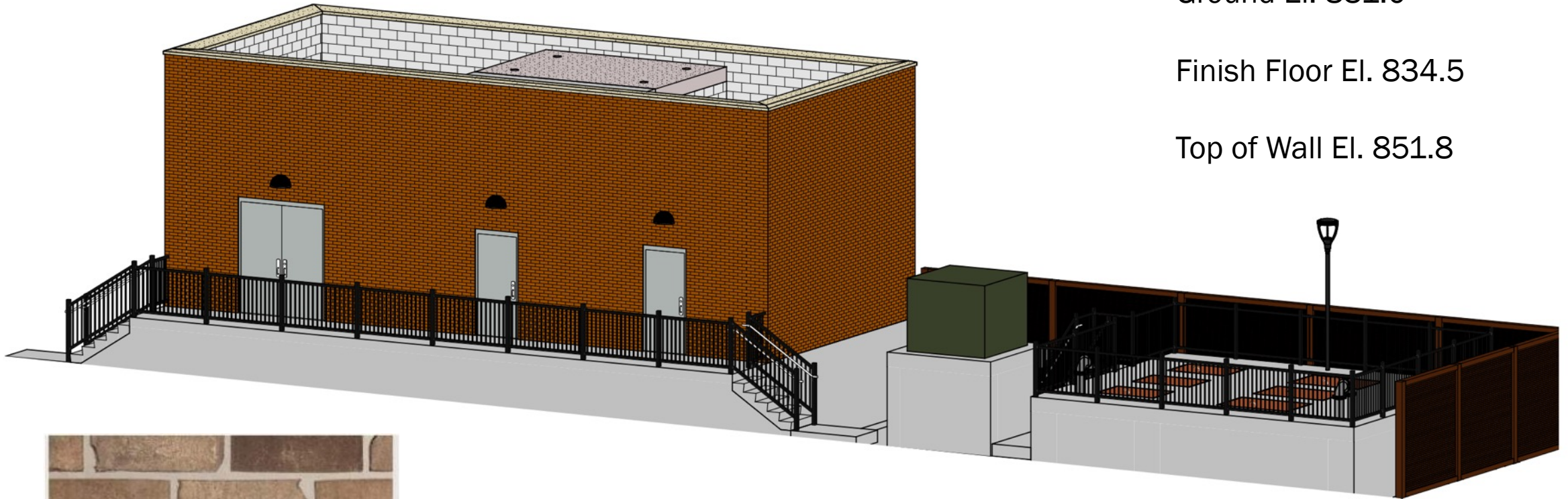
# Facility Elevation View from NW

1,465 SF

Ground El. 831.0

Finish Floor El. 834.5

Top of Wall El. 851.8





# Odor/Noise Mitigation

Pump Station 13/13A - 10346 State Line

# Pump Station Odor Control

## Best Available Technologies

- Vapor Phase Carbon Scrubber
  - Periodic Carbon Media Inspection and Replacement
  - Fan Monitored Remotely
- Chemical Injection
  - Inhibits formation of odorous constituents

JCW has a hotline for residents to inform JCW of odor concerns. A ticket is created, and a crew will be sent to the site within 24 hours to address the issue. The hotline can be accessed at (913) 715-8600.

# Pump Station Noise Suppression

- Pumps
  - Below Grade, Submerged, Undetectable Offsite
- Odor Control Fan
  - Acoustical Enclosure and Surrounded by Walls
  - Meets Leawood City Noise Ordinance



# Schedule

Pump Station 13/13A – 10346 State Line

# Schedule

- City of Leawood City Council – August 15th
- Engineering Design
  - August 2022 to June 2023
- Bidding & Contract Award
  - July 2023 to October 2023
- Right of Way Acquisition
  - July 2022 to June 2023
- Construction
  - November 2023 to April 2025
- Pump Station in Service
  - May 2025

# Questions?

